

REFLECTYS

UNIVERSAL RESTORATIVE COMPOSITE

Anterior and posterior universal composite (class I to V)



Restoration of both posterior teeth with important mastication constraints and anterior teeth which need a high-level aesthetic finish.

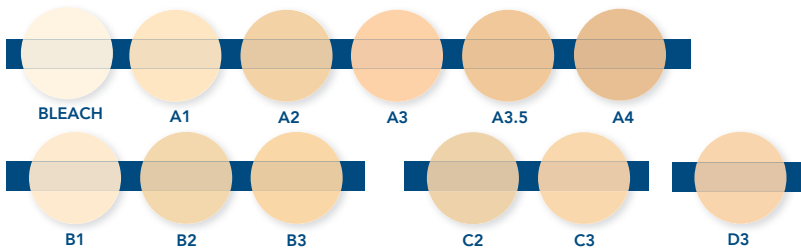
- All classes (I to V)
- Corrections of the tooth shape and color
- Repair of fractured teeth
- Restoration of milk teeth

- **True mimesis:** true reflection of natural teeth
- **Remarkable mechanical properties:** optimal resistance to abrasion, compression and fracture
- No post-operative sensitivity
- **Invisible restoration,** perfect integration of the composite. Invisible joints.
- **Exceptional aesthetic quality** after polishing
- Optimized composition: nano-hybrid composite reinforced
- Excellent **material malleability:** ideal texture, does not stick to instruments or gloves, easy to shape, quick and easy polishing
- **For simple cases and complicated clinical situations:** stratification possible
- **Low polymerization shrinkage:** impeccable integrity at the edges of the restoration
- Light-curing

17 shades available

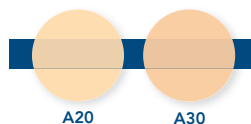
« Dentine » shades

Universal shades with medium translucency to fit all clinical cases.



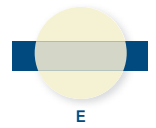
« Opaque » shades

Very low translucency to mask dental staining.



« Enamel » shades

Very high translucency. This shade is intended to reproduce the enamel layer above the previously light-cured Opaque or Dentin layer. It is used for adult teeth.



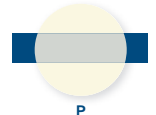
« Incisal » shades

Very translucent. Developed for enamel restorations in young adults and for areas that require natural transparency.



« Pedito » shades

Light shade and lightly chalky white. Recommended for milk teeth.





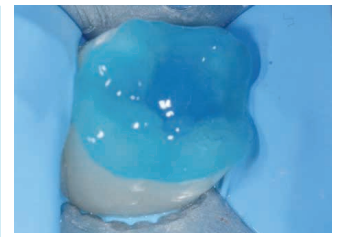
1 Carie X-ray on the 36



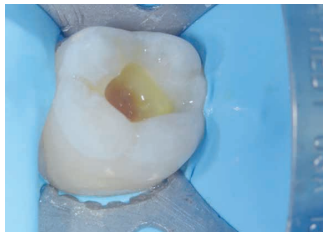
2 Initial situation before treatment occlusal carie on the first left lower molar



3 Treatment of the carie



4 Enamel etching during 30s and on the dentin with DENTOETCH during 15s



5 Rinse during 15s and dry the cavity until obtaining a white chalky aspect on the surface



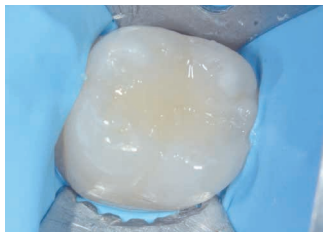
6 Application of the bonding IPERBOND MAX during 20s then soft air spray during 5s. Repeat the operation a second time. Lightcuring for 20s + 20s



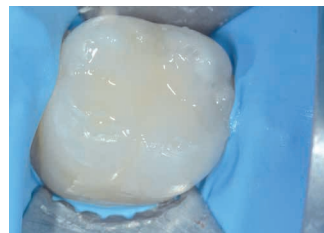
7 Application of a thin layer of glass ionomer cement: sandwich technique



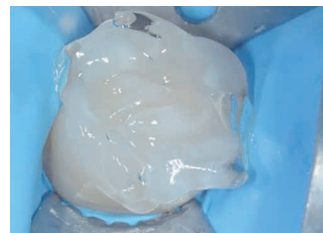
8 Application of a layer of REFLECTYS Flow A3. Light-curing for 20s



9 Application of REFLECTYS A2 Dentin composite in two steps. Light-curing for 20s at each application



10 Application of REFLECTYS Enamel composite in a thin layer. Light-curing for 20s



11 Glycerin coating and light curing for 20s



12 Final situation after treatment and complete rehydration

References

	4g syringe + 1 spatula	20 capsules of 0.25g
A1	SRTYS-A1	CPTYS-A1
A2	SRTYS-A2	CPTYS-A2
A3	SRTYS-A3	CPTYS-A3
A3.5	SRTYS-A3.5	CPTYS-A3.5
A4	SRTYS-A4	CPTYS-A4
B1	SRTYS-B1	CPTYS-B1
B2	SRTYS-B2	CPTYS-B2
B3	SRTYS-B3	CPTYS-B3
C2	SRTYS-C2	CPTYS-C2
C3	SRTYS-C3	CPTYS-C3
D3	SRTYS-D3	CPTYS-D3

Shades for stratification

Enamel	SRTYS-E	CPTYS-E
Incisal	SRTYS-I	CPTYS-I
Pedo	SRTYS-P	CPTYS-P
Opaque A2	SRTYS-A2O	CPTYS-A2O
Opaque A3	SRTYS-A3O	CPTYS-A3O
Bleach	SRTYS-BLC	CPTYS-BLC

Technical Data

Polymerization depth2,95 mm
Compressive strength307 MPa
Bending strength164 MPa
Film thickness8,2 µm
Water absorption23.1 µg/mm ³
Water solubility39.3 µg/mm ³
Auto-setting time2,20 %
Radiopacity220 % of Al

REFLECTYS Kits

Restoration kit : for everyday restorations
 4 REFLECTYS syringes (A2, A3, A3.5, B2)
 + 1 bonding IPERBOND MAX.....KTYS-4.1B

Stratification kit : for the most delicate and aesthetic cases
 7 REFLECTYS syringes (A1, A2, A3, Opaque A2, Opaque A3, Enamel, Incisal) + 1 IPERBOND MAX bonding
 + 4 DENTOETCH etching gels.....KTYS-7.2BE

Find us on www.itena-clinical.com

